

EAST JACKSON COUNTY QUARRY

# REACHING HIGHER

OUR COMMITMENT TO YOU



**Vulcan**  
Materials Company  
East Jackson County Quarry

# Committed to You & Jackson County

We are committed to responsibly building our investment in Jackson County by creating and supporting jobs and economic opportunity while operating safely, reliably and in an environmentally responsible manner.

We make the construction aggregates that help grow and sustain communities while forming the building blocks for the region's roads, bridges, homes, hospitals, schools, offices and places of worship.

## Economic Benefits

**\$40M+**

Additional investment in Jackson County

**10-13+**

New jobs created + employment ramp up in future

## Builds on our current economic benefits:

**\$1.1M**

Approx. annual spend with County businesses and organizations

**\$1.2M**

Approx. annual investment operational and capital expenses

**36**

Employees and retirees living in Jackson County

**\$49,000+**

Contributions and donations to schools and community organizations in the region

## Our Commitments



Meet/exceed local, state and federal laws & regulations



Preserve and protect local water resources



Industry-leading safety performance



Maintain controls & procedures to protect the air



Proposed conservation/recreation area



Vegetated berms

# We Make Big Rocks Into Small Rocks

What we do is simple. But it has to be done The Right Way.



**Engineers** design mine plans which serve as the blueprints for the entire operation. Our **inventory** is the rock in the ground. It is mined at a rate based on **customer demand** which is largely tied to the economy.



Using the mine plans, **licensed and trained technicians**, adhering to specific depths and patterns, drill holes into the rock.



We **safely and precisely** remove a specific amount of rock from the ground through highly controlled blasts that last less than a second.

Loader and haul truck **drivers** transfer the rock to the primary crusher, to make smaller rocks.



The rock is transported via a **conveyor** to the processing plant where it is processed, sized and sorted to meet customer **specifications**.

Product is **shipped** via local customer trucks.



Trucks are weighed and ticketed before traveling to job sites and **customers** for use in homes, businesses, roads and bridges.

**38,000 tons**

builds one lane-mile of a four-lane interstate highway

**400 tons**

builds the average home

**94%**

amount of aggregate in asphalt pavement

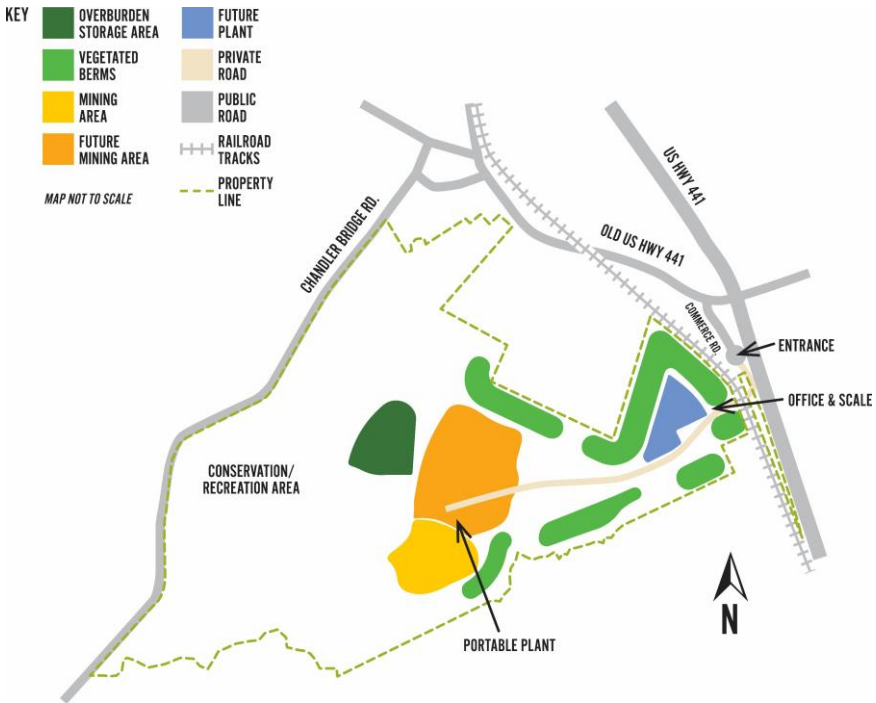
**80%**

amount of aggregate in concrete

# Our Working Plans to Responsibly Grow our Investment in Jackson County

The proposed project would be located on a portion of a larger approximately 837-acre property that is off US Highway 441 near Richmar Road in East Jackson County by Athens Stonecasting and other manufacturing.

We will use a portable plant and construct an entrance with an office and scale. Berms will be built and vegetated as the project progresses. We expect to be in the first Mining Area for about 10-20 years and the Future Mining Area for 30+ years. In the future, we would build a fixed plant near the entrance. The initial mining area would be used for earthen overburden storage.



We are committed to working with our neighbors and stakeholders to design, build and operate East Jackson County Quarry in a safe and environmentally responsible way.

Please contact us at (706) 247-7529 or [EastJacksonCountyQuarry@vmcmail.com](mailto:EastJacksonCountyQuarry@vmcmail.com) if you have questions, comments or feedback.